

# Bluff Creek - Mulberry Creek Transmission Improvements Project

AEP Texas representatives plan to upgrade the electric transmission grid in West Texas by rebuilding about 27 miles of 345-kilovolt (kV) transmission line and adding additional wire or conductor to the new structures.

AEP Texas plans to replace existing wooden H-frame poles with monopole steel structures within the company's existing easements. New poles are necessary to accommodate the additional circuit while also minimizing the structures' footprint.

## What

The project involves:

- Rebuilding about 27 miles of the 345-kV Mulberry Creek - Bluff Creek transmission line to accommodate the addition of a second 345-kV line
- Upgrading equipment at area substations

Because the line was originally approved by the Public Utility Commission of Texas (PUCT) to operate with a single circuit, AEP Texas officials plan to apply for a Certificate of Convenience and Necessity (CCN) with the PUCT in early 2026 to include the additional circuit.

## Why

As a result of Texas House Bill 5066, the PUCT directed the Electric Reliability Council of Texas (ERCOT) to develop a reliability plan for the Permian Basin region.

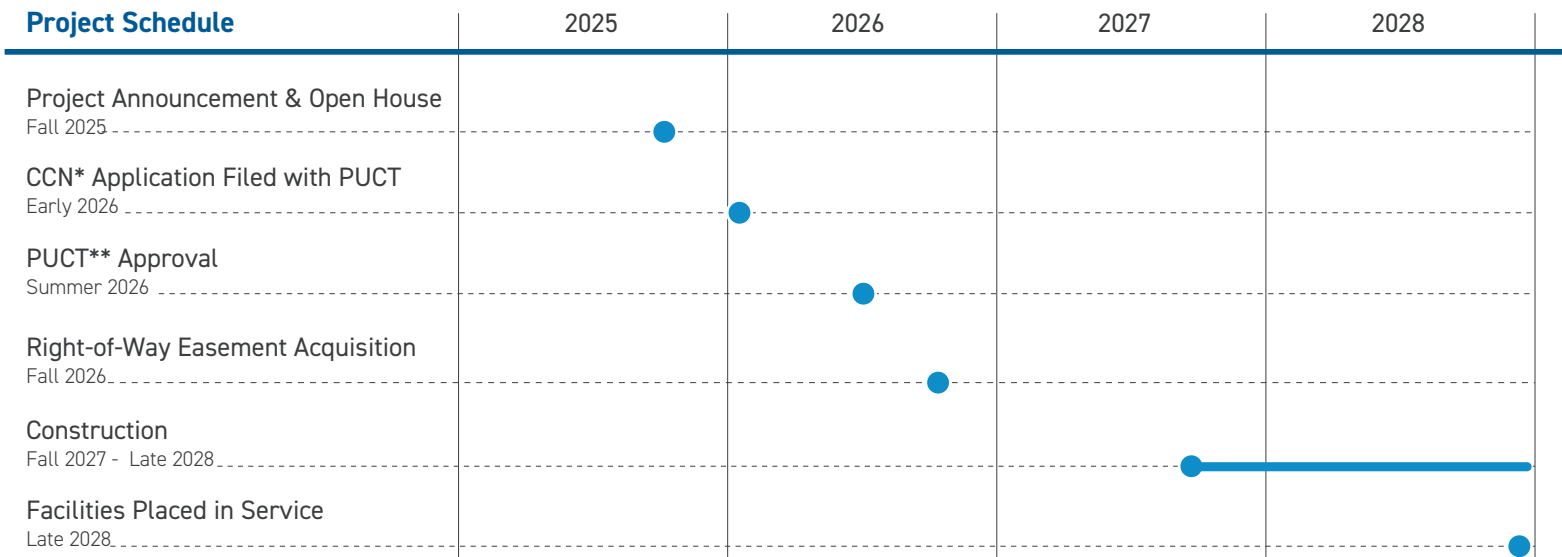
The Mulberry Creek - Bluff Creek is part of that reliability plan. This rebuild project:

- Replaces existing poles with a less-intrusive, modern steel pole design
- Increase the area's electric reliability by decreasing the likelihood and duration of wide, community-sustained outages.
- Providing additional capacity for growth and economic development

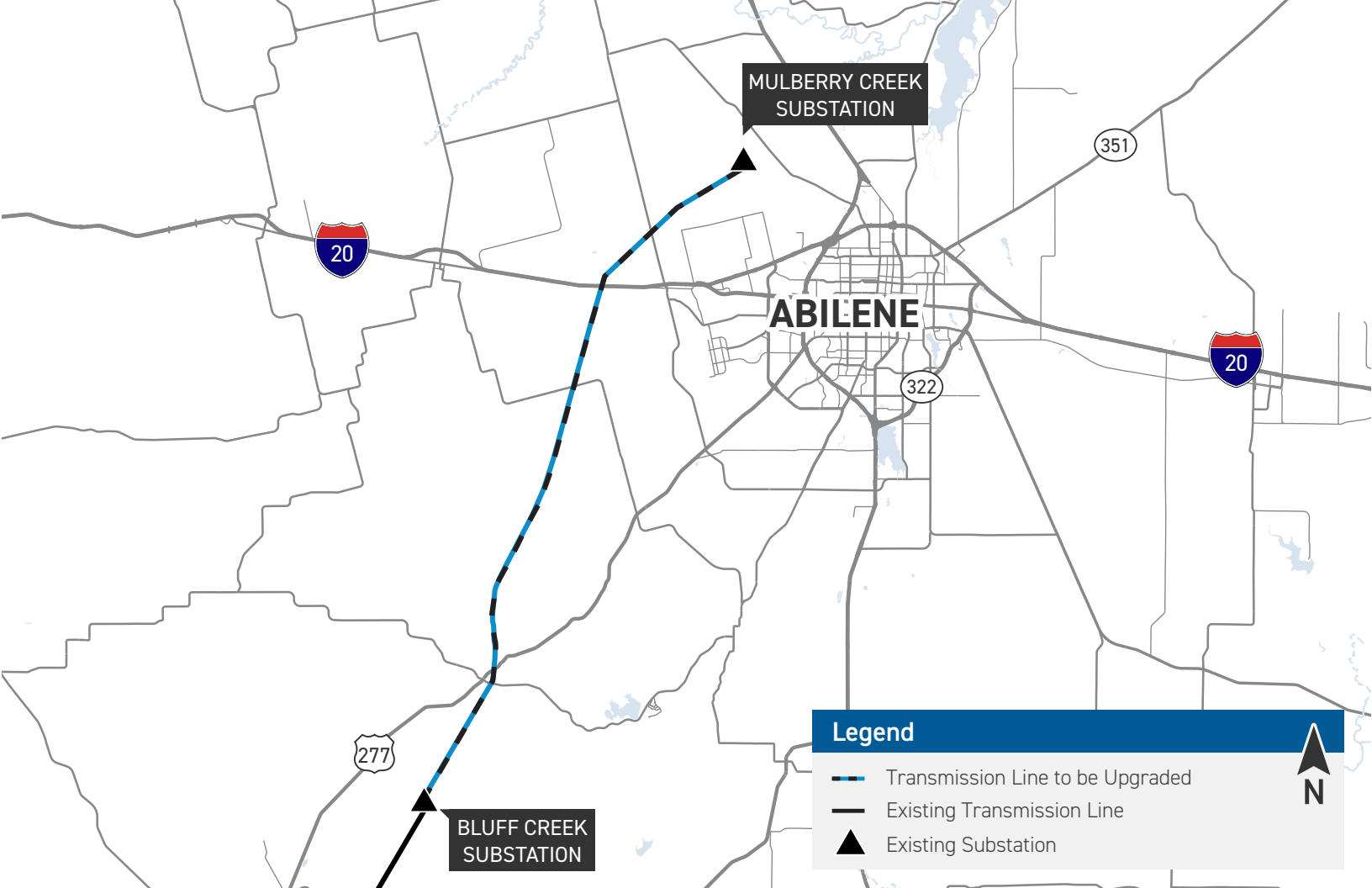
## Where

The project area includes the cities of Buffalo Gap and Tye in Taylor County.

## Project Schedule



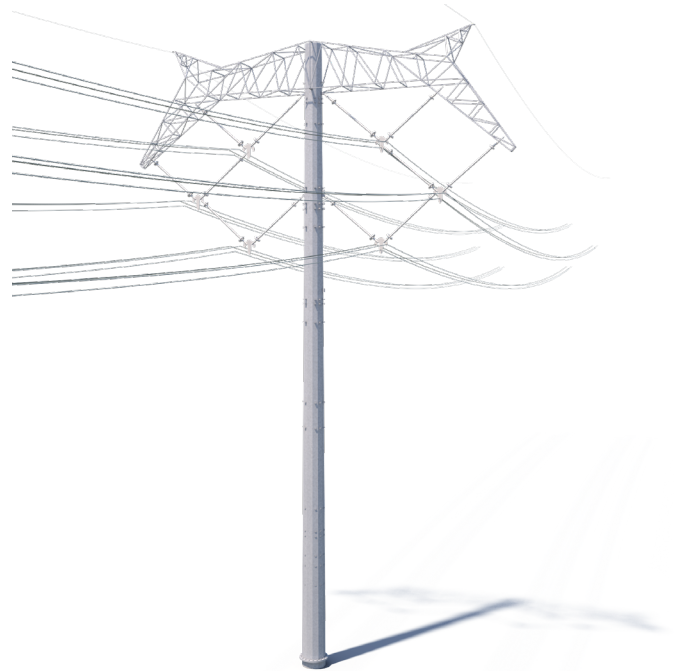
\*Timeline subject to change. \*\*Public Utility Commission of Texas



### Typical Structures

The new structures will include AEP's **Breakthrough in Overhead Line Design (BOLD)** technology, which is capable of operating more efficiently than conventional transmission pole designs.

Typical Height: 130 Feet  
 Typical Right-of-Way Width: 150 Feet



*Representative structure, exact height and right-of-way requirements may vary based on geography and other factors.*



**We value your input. Please send comments and questions to:**

Katelyn Hahn • Outreach Specialist  
 AEPTexasOutreach@AEP.com • 833-329-4865

[AEPTexas.com/Bluff-Mulberry](https://www.aep.com/Bluff-Mulberry)